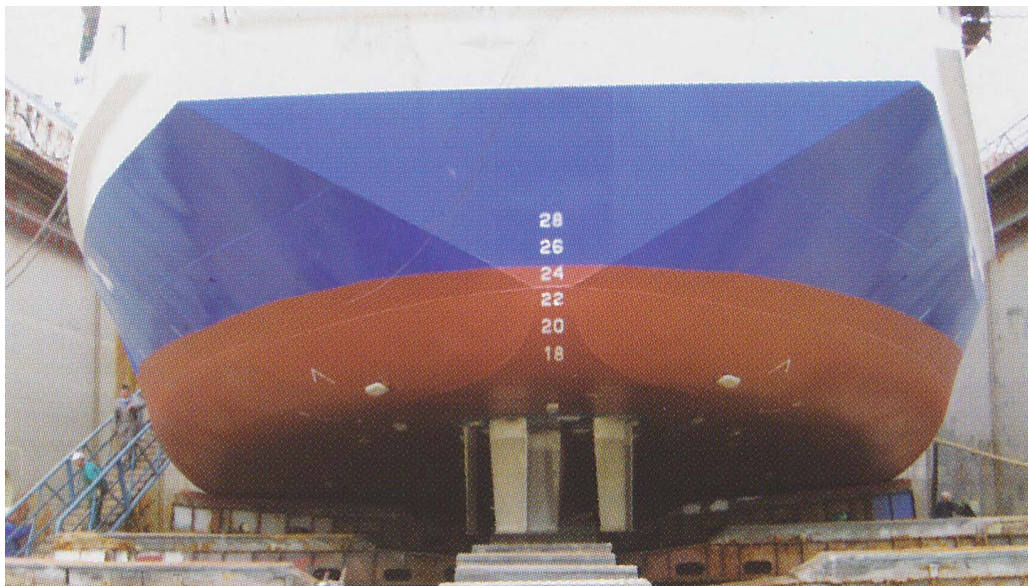


Comparison of C and W Class Voith Schneider Thrusters



One of the smaller, shallower offset C Class VS thruster. Both thrusters were used in the river.



One of the much larger, more powerful and deeper set W Class VS thrusters. Only the bow thruster is used in the river as the wake from the other was deemed to be dangerous. The flow from it is forced between the hull and the river bed and banks.

Photographs to the same scale